

the

AUSTRALIAN NATIONAL UNIVERSITY

parenting
spaces

Book

UPDATED AUGUST 2019

Brought to you by the ANU Family Friendly Committee

Mrs Andrea Butler

ANU Family Friendly Committee

E: andrea.butler@anu.edu.au

contents

- 3 Map
- 3 Room rating system
- 4 Acton Early Childhood Centre
- 5 Beryl Rawson Building
- 6 College of Business & Economics
- 7 Computer Science & Information Technology
- 8 Fenner School of Environment and Society
- 9 Handcock Library
- 10 HC Coombs Building
- 11 Jaeger 8 Building
- 12 JB Chifley Building
- 13 Kambri / Di Riddell Student Centre

contents

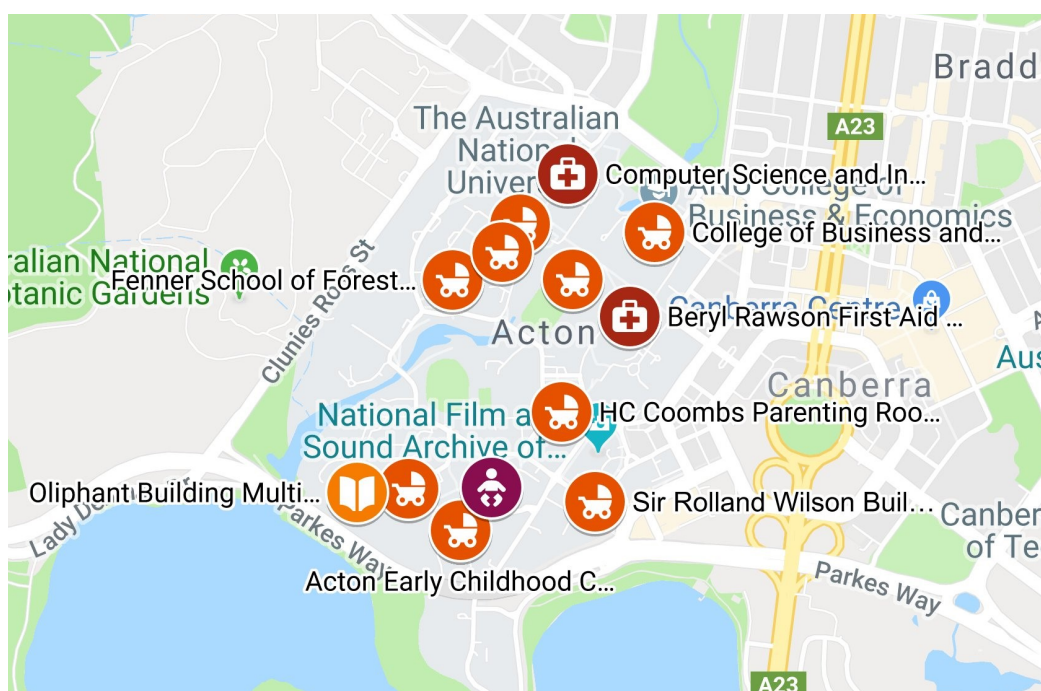
- 14 Mount Stromlo Observatory
- 15 Oliphant Building
- 16 Research School of Chemistry
- 17 Sir Roland Wilson Building
- 18 ANU Family Friendly Committee
- 18 Helpful notes

map



An interactive version of this map is available at :

<https://goo.gl/aBqaGR> or linked by the QR code below. The interactive map shows you each parenting room with plenty of helpful photos of the buildings, parenting room doors and included facilities.



room rating system



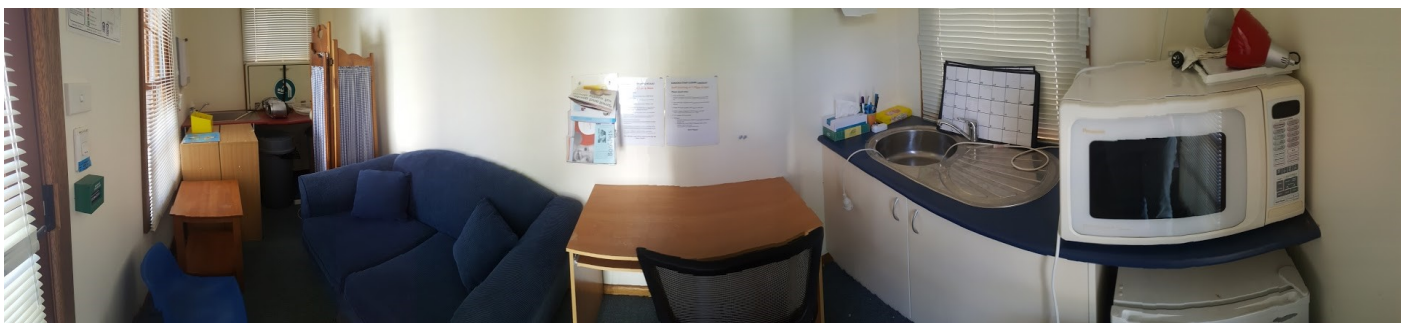
The star rating system utilized in this booklet is borrowed from the Essential Criteria for a Baby Care Room as prepared by the **Australian Breastfeeding Association**. The current assessments were completed by Ms Kathryn Eden as part of an undergraduate student project. Several of the room ratings are based on pending improvements in signage and access.

Acton Early Childhood Centre

22 Balmain Cres



Room	Type	Open
	parenting room	7.45am-6pm



Facilities

access

door easily managed
wide door

seating

comfortable lounge
chair
table

feeding

fridge
food preparation area
microwave

privacy

privacy screen
lockable door

nappy change

fold-down table

waste disposal

sink

powerpoints

Other information

swipe card access

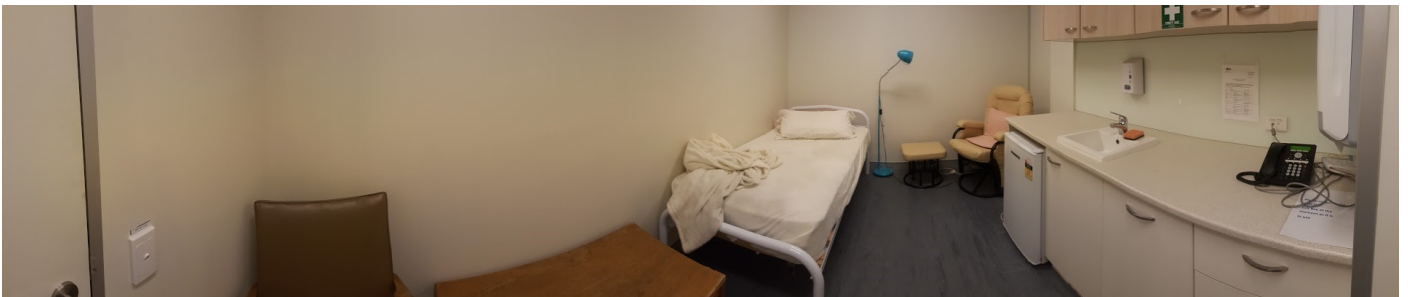
sign in with childcare centre to get a swipe card. Please sign out when you leave.

Beryl Rawson Building

Building#13



Room	Type	Open
1.24	first aid room	during business hours



Facilities

access

door easily managed
wide door

seating

comfortable chair
table
bed

feeding

fridge

privacy

separate room

waste disposal

sink
hand wash

powerpoints

Other information

in-use

swipe room sign from 'vacant' to 'in-use'.

College of Business & Economics

Building#26C



Room	Type	Open
1.01B	parenting room	during business hours



Facilities

access

door easily managed
wide door

seating

comfortable lounge chair
table

feeding

food preparation area
microwave

privacy

lockable door

nappy change

fold-down table

waste disposal

sink

powerpoints

Other information

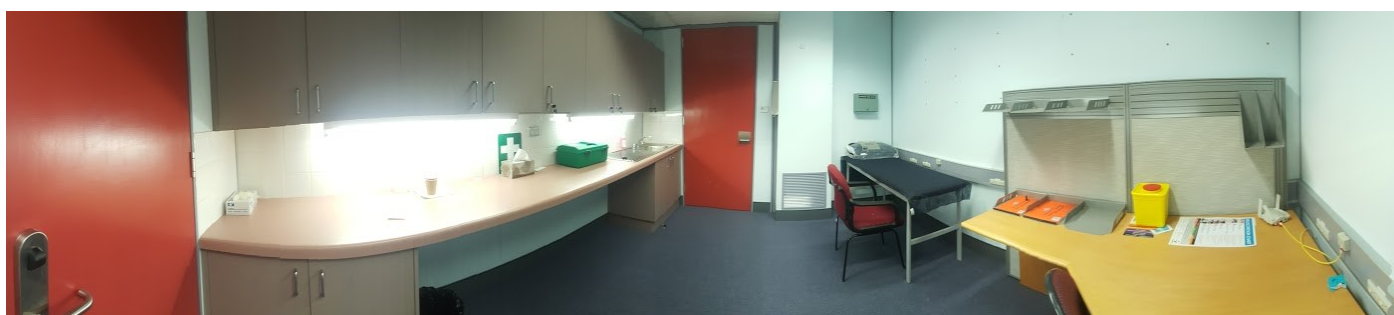
swipe card access

Computer Science & Information Technology

Building# 108



Room	Type	Open
N321	first aid room	during business hours



Facilities

access

door easily managed
wide door

seating

chair

feeding

fridge

privacy

privacy screen
lockable door

nappy change

fold-down table

waste disposal

sink

powerpoints

Other information

Fenner School Forestry Building

Building#48



Room	Type	Open
19	parenting room	during business hours



Facilities

access

door easily managed
wide door

seating

comfortable lounge chair

feeding

fridge
food preparation area
microwave

privacy

lockable door

waste disposal

sink

nappy change

fold-down table

powerpoints

Other information

key access

To access room please see reception at Frank Fenner Building 141 to ask for a key.

Handcock Library

Building# 122



Room

Type

Open

parenting
Room

during library hours



Facilities

access

door easily managed
wide door

seating

comfortable lounge chair
side table

nappy change

change table in adjacent disabled bathroom

waste disposal

sink

privacy

lockable door

powerpoints

Other information

feeding

kitchenette located nearby, with boiling water,
microwave and fridge

swipe card access

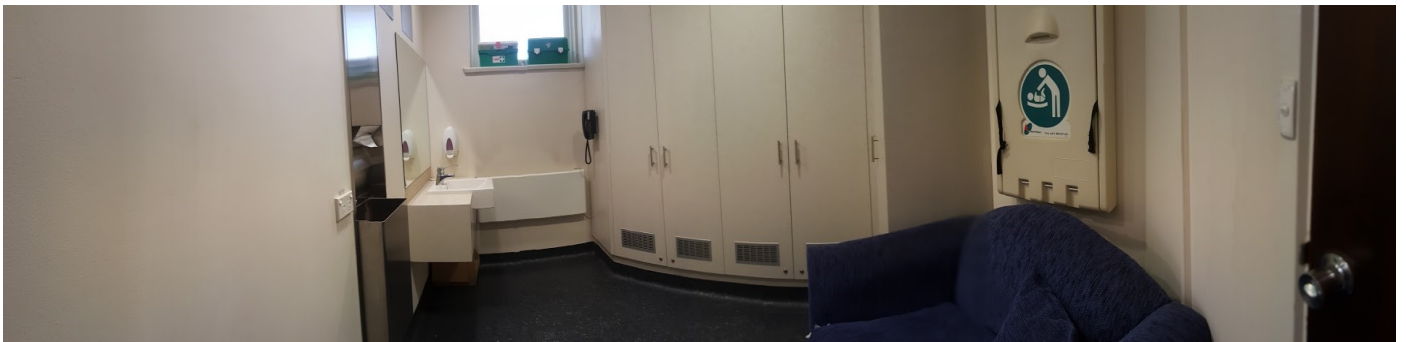
need swipe card or ask librarian for access

HC Coombs Building

Building#9



Room	Type	Open
1009	parenting room/first aid	during business hours



Facilities

access

door easily managed
wide door

seating

comfortable lounge

nappy change

fold-down table

privacy

lockable door

waste disposal

sink

powerpoints

Other information

location

room difficult to find

Jaeger 8 Building

Building# 142



Room	Type	Open
1.07	parenting room	during business hours



Facilities

access

door easily managed
wide door

seating

comfortable lounge chairs, foot rest
table

feeding

fridge
food preparation area (outside)
sink (outside)

privacy

privacy screen
lockable door

toys

toys and books for toddlers

waste disposal

powerpoints

Other information

swipe card access

check with reception

JB Chifley Building

Building#15



Room

4.13

Type

parenting
room

Open

during library hours



Facilities

access

door easily managed
wide door

seating

comfortable lounge
table

feeding

fridge
food preparation area
microwave

privacy

privacy screen
lockable door

nappy change

fold-down table

waste disposal

sink
bins

powerpoints

Other information

swipe card access

location

in 'silent' section of the library

Kambri / Di Riddell Student Centre

Building 154



Room

2.57

Type

parenting
room

Open

during business hours



Facilities

access

no door, curtain for privacy

seating

comfortable lounge chairs and bench seats

nappy change

portable change table, nappies provided

toys

toys and books for toddlers

feeding

fridge

hot/cold water and microwave in Brian Kenyon Student Space

high chair

privacy

curtain for privacy, separate from main parenting room

powerpoints

Other information

location

second floor past gender neutral toilets, signs from lift

Mount Stromlo Observatory

Cotter Road



Room

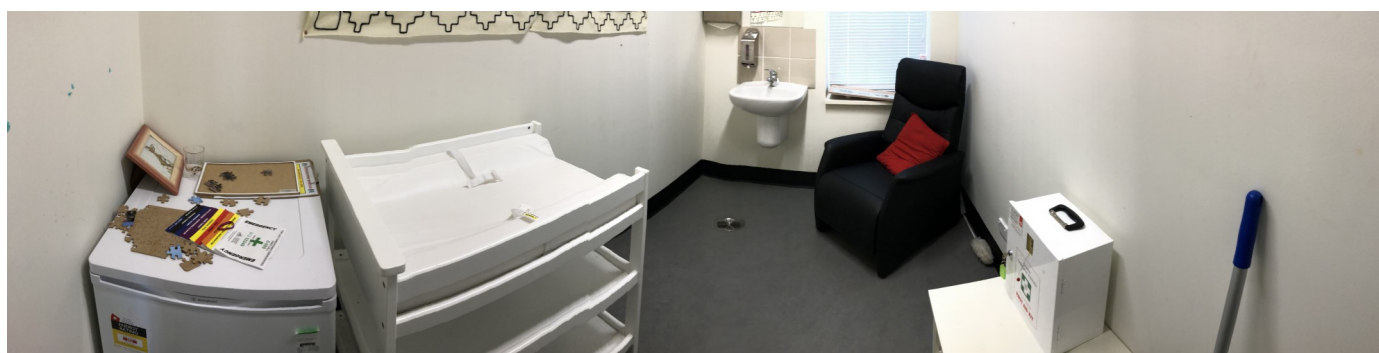
1.21

Type

parenting
room

Open

during business hours



Facilities

access

door easily managed
wide door

seating

comfortable lounge chair

nappy change

portable change table

A bathroom with change table is located in the Mount Stromlo Visitor's Centre and Café.

feeding

fridge
microwave in adjacent staff kitchenette

privacy

lockable door

powerpoints

waste disposal

sink
hand wash

Other information

waste disposal

no bins

location

behind astronomy reception

Oliphant Building

Building#60



Room	Type	Open
OL3.07	privacy room	during business hours



Facilities

access

door easily managed
wide door

seating

comfortable lounge
chair
table

toys

toys and books for toddlers

privacy

'occupied' sign on door

waste disposal

recycling bin

powerpoints

Other information

booking and access

to access room see reception and book into the 'Privacy Room'.

Research School of Chemistry

Building#137



Room

1.07

Type

privacy room

Open

during business hours



Facilities

access

door easily managed
wide door

seating

comfortable lounge chair
table

nappy change

portable change table

privacy

lockable door

powerpoints

Other information

location

hard to find, door unmarked

key access

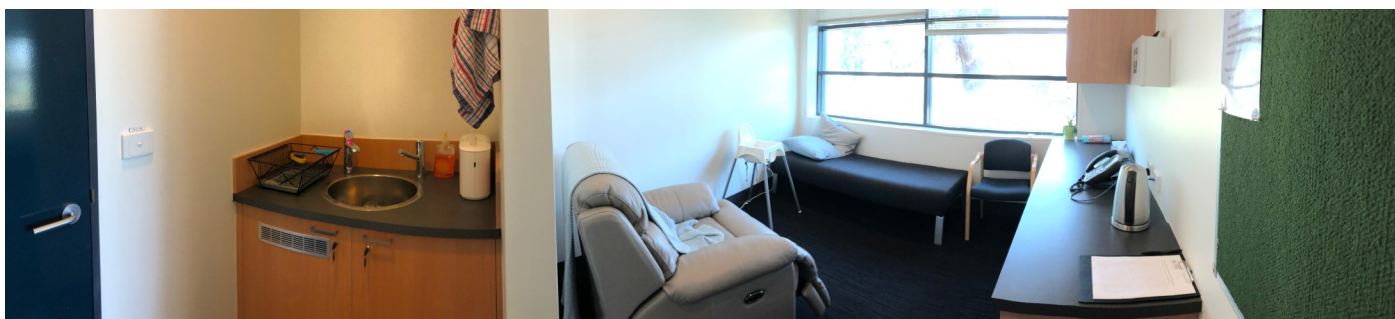
to access room please see reception and ask for a key.

Sir Roland Wilson Building

Building# 120



Room	Type	Open
1.13	parenting room	during business hours



Facilities

access

door easily managed

seating

comfortable lounge chair
couch/day bed

nappy change

toilet with baby change down the hall

toys

toys and books for toddlers

Other information

waste disposal

nappy disposal in nappy change toilet down the hall

feeding

microwave
fridge
kettle
high chair
tea/coffee

privacy

lockable door

powerpoints

first aid kit

ANU Family Friendly Committee

The ANU Family Friendly Committee is a sub-committee of the ANU Gender Institute that promotes a welcoming and safe environment for children, parents and carers.

The Committee advocates for:

- Open and clear information
- Removing barriers to increase inclusion
- Breastfeeding in public and accessible breastfeeding facilities
- A more child and family friendly campus
- Return to work support and flexibility
- Policies that enhance work-life balance

Initiatives

Family Friendly Working Group

Supporting Breastfeeding at ANU Working Group

Get involved!

Sign up for the ANU Family Friendly email group list, for the latest in family friendly news, information and events on campus: <http://mailman.anu.edu.au/mailman/listinfo/anu.family.friendly.group> or visit the ANU Family Friendly Facebook page: <https://www.facebook.com/groups/2301838023376090/>

helpful notes

ANU supporting breastfeeding mothers webpage:

<https://services.anu.edu.au/human-resources/wellbeing/supporting-families/supporting-breastfeeding-mothers>

ANU Gender Institute Parents and Carers webpage:

<http://genderinstitute.anu.edu.au/parents-and-carers>

PARSA's Parents webpage:

<https://parsa.anu.edu.au/student-support/parents/>

Interactive parenting rooms map:

<https://goo.gl/aBqqGR>



The parenting spaces book